



## 1 - Your Offer

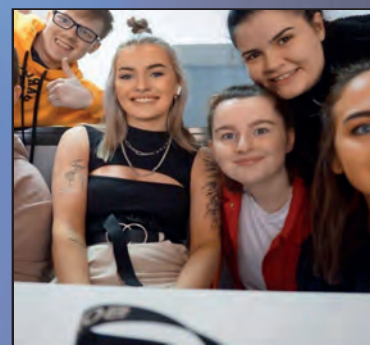
**Great! Now that you've accepted your offer, read the letter from the Admissions team.**

## 2 - Results

**Your next step will be sending us copies of your results. Please do this as soon as possible!**

## 3 - Our App!

**Download our app on Day one! Everything you need is there! Available on Google & Apple.**



## 4 - Student Finance

**Money is important, click on this box to access our self-assessment tool to see what you need for Student Finance.**

## 5 - Learning Link

**If you have ticked the 'additional needs' box, learning link will be in touch. Or you can use: [learninglink@nrwc.ac.uk](mailto:learninglink@nrwc.ac.uk)**



## 6 - Transport

**You could be entitled to transport to the college. [Click here to check your eligibility!](#)**

## 7 - Covid-19

**Check out our website for the latest Covid guidelines within the college. [Click here](#)**



## 8 - Campus Map

**Click the image below to check out our map!**



## 9 - Safeguarding

**If you have ticked the 'Safeguarding' boxes, our officer will be in touch. Or you can email: [safeguarding@nrwc.ac.uk](mailto:safeguarding@nrwc.ac.uk)**

## 10 - Students Union

**NWRC Students' Union is run by the students, for students. We look after your college experience so that learning is fun! [Click here for more info](#)**

## 11 - AccessNI

**If your course requires an Access NI check, you will be emailed the registration form and required to provide 3 pieces of ID to complete.**

**Well done on choosing NWRC! Student Services are here to support you at every stage of your education with us. We look after Library, Students Union, Safeguarding, Counselling, Student Finance, Learning Link, Health and Wellbeing and Societies!**

**Feel free to get in touch! [Click here for more information](#)**

## Careers Advice

**Have you applied for the right course? Do you require further careers information and guidance? Have you got GCSE maths & English or equivalent or grade C or above? Do you need a tailored career plan? Are you interested in setting up your own business?**

**Email us on [careers@nrwc.ac.uk](mailto:careers@nrwc.ac.uk), follow NWRC careers academy on social media platforms or [click HERE](#) to find out more!**

Check us out on:



NWRC Student Services Team